

GROUND FLOOR LAYOUT 1:100

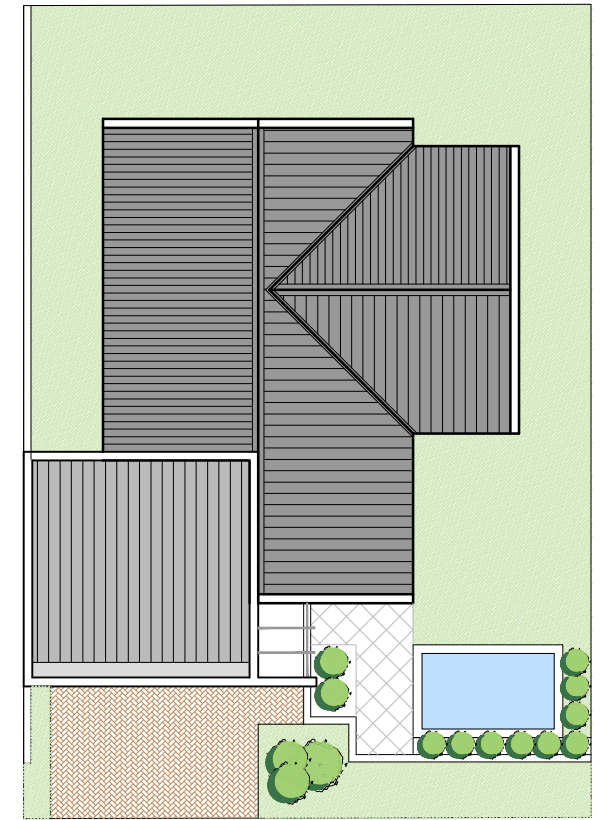
3-BEDROOM AREAS  
**Type C - Classic 3 Collection**

Site Area = 323m<sup>2</sup>

GROUND FLOOR

- Driveway = 19m<sup>2</sup>
- Entrance walkway = 4m<sup>2</sup>
- Covered Entrance = 2m<sup>2</sup>
- Double Garage = 38m<sup>2</sup>
- Entrance Hallway = 3m<sup>2</sup>
- Dining Area = 16m<sup>2</sup>
- Living Area = 20m<sup>2</sup>
- Covered Patio = 11m<sup>2</sup>
- Kitchen = 10m<sup>2</sup>
- Family Bathroom = 6m<sup>2</sup>
- Bedroom 2 = 11m<sup>2</sup>
- Bedroom 3 = 10m<sup>2</sup>
- Main Bedroom = 15m<sup>2</sup>
- En-suite = 6m<sup>2</sup>
- Optional Pool = 10m<sup>2</sup>
- Optional Pool Terrace = 8m<sup>2</sup>
- Garden Area = 134m<sup>2</sup>

**TOTAL GROUND FLOOR  
 AREA = 148m<sup>2</sup>**



ROOF LAYOUT 1:200



LOCALITY PLAN

PROJECT:  
**MZURI**  
 RESIDENTIAL DEVELOPMENT  
 SOMERSET WEST

DRAWING:  
 CLASSIC 3 COLLECTION  
**HOUSE TYPE C**  
**ERF 20398 - PLOT 65**

DRAWING DESCRIPTION:  
**GROUND FLOOR &  
 ROOF LAYOUT**

DATE:  
 01/09/18

REV.:  
**B**

DRAWING No.:  
**SK-CL3-C-01-20398**

4th Floor, M&B House, Pier  
 Place,  
 Foreshore, Cape Town 8001  
 t. (+27)21 4259809  
[www.mbarchitects.co.za](http://www.mbarchitects.co.za)

